

AUGUST

S M T W T F S  
18 19 20

RECEPTION 5-7

21 22 23 24 25 26 27  
28 29 30 31

**Opening Reception** Thursday, August 18, 5–7pm



CLOCKWISE: TOP LEFT, NELSON RARITIES; JEANNIE HWANG; SARAH GRAHAM; NELSON RARITIES

BARBARA HEINRICH

**Black Diamonds**

Black diamonds, more intriguing than their colorless cousins, are inspirational for these innovative artists.

CAROL ACKERMAN PETRA CLASS DEVTA DOOLAN SARAH GRAHAM  
BARBARA HEINRICH SUSAN HOGE JEANNIE HWANG REBECCA MYERS TODD REED

**Nelson Rarities Incredible Estate Jewelry**

Our tenth year of presenting some of the finest estate jewelry available.

AUGUST 19–AUGUST 21 ONLY

**UPCOMING SHOWS**

September 1–September 21 **ROBERT SHETTERLY/SUSAN SAUNDERS**

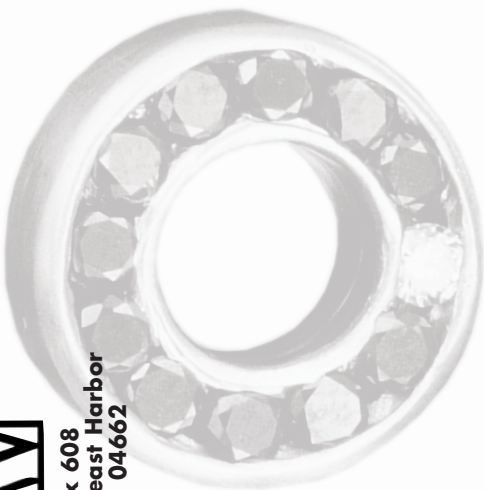
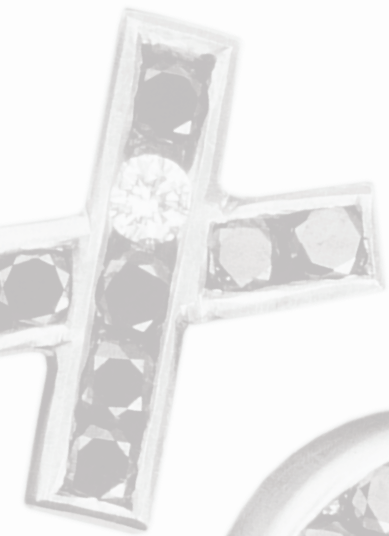
September 22–October 12 **NANCY McCORMICK**



SHAW JEWELRY

www.shawjewelry.com  
877.276.5001 207.276.5000

Presorted  
First Class Mail  
US Postage Paid  
Permit No. 46  
Bangor, Maine



PO Box 608  
Northeast Harbor  
Maine 04662



NELSON RARITIES



August 18–August 31, 2005

**Black Diamonds**  
**Nelson Rarities Incredible Estate Jewelry**

open daily until 6:30pm

[www.shawjewelry.com](http://www.shawjewelry.com)  
**877.276.5001 207.276.5000**

SHAW JEWELRY 100 Main Street, Northeast Harbor